

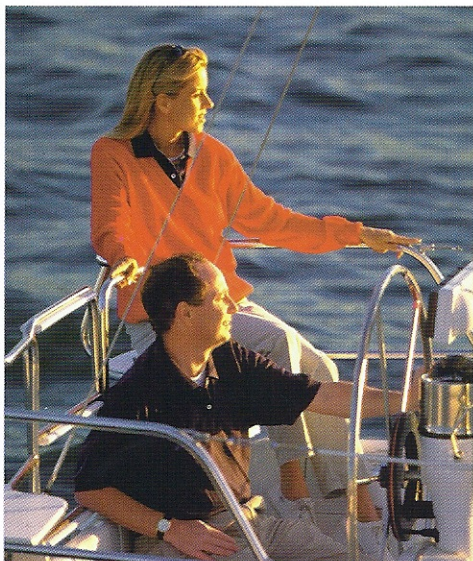
*Catalina* // *Yachts*



**Get Your Dream's Worth.**

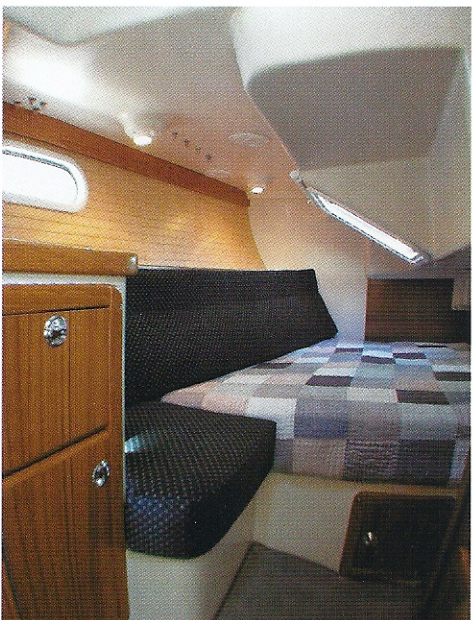


Since the introduction of the Mark I model in 1985, the Catalina 34 has built a well deserved reputation as a classic blend of performance, comfort and value. The devoted following of Catalina 34 owners now stretches worldwide, making it the most popular thirty-four foot sailboat ever built.



The Catalina 34mkII is a reflection of listening to what our owners want most: easy maintenance, solid reliability, comfort underway and at anchor.

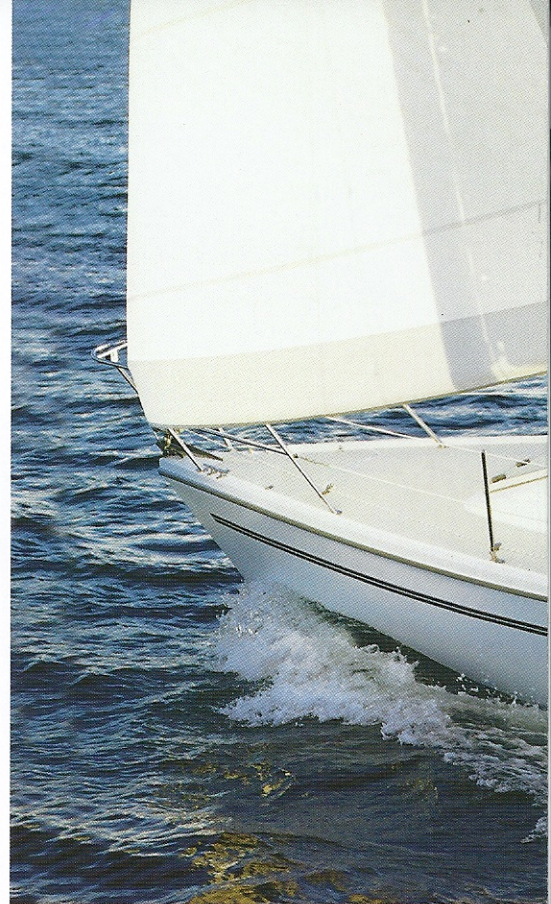
The experience of building 34s for close to two decades has proved the practicality of the masthead rig with fore and aft lowers, forestay and backstay. The inboard shroud base leaves more room for secure footing on the non-skid deck and provides for narrow sheeting angles and the ability to carry large genoas. The rigid boom vang



and double ended mainsheet system make sail handling easier and more secure.

The cockpit begins with two of our well-known "sleeping length" seats. The handsome transom not only increases cockpit volume, but presents wide tapered coamings for additional seating options for captain and crew. The sleek new stern includes an unobstructed boarding platform, hot and cold fresh water shower and extra wide boarding ladder that folds to become part of the stern rail. The ever popular stern observation seats are cleverly integrated into the rail with drink holders. Also included is an integral motor mount for the dinghy outboard.

The skipper will find a traditional pedestal steering station with a 40 inch stainless wheel. The large rudder delivers a high level of precision and tracking through all points of sail. Visibility is unrestricted with the ultra-low profile ball bearing mainsheet traveller. An available fiberglass cockpit table has two folding leaves, storage bin and crew foot rest.



High strength polished stainless steel hand rails on deck keep help keep maintenance to a minimum. The oversize anchor locker comes with a standard electric windlass and heavy anchor roller.

Large two speed, self-tailing primary and secondary winches allow crew members to adjust sail trim single-handedly. Headsail furling gear is standard, with Dutchman™ sail flaking system on the

main. You have a choice of an available in-mast or in-boom mainsail furling system.

The warm glow of satin varnished teak and ash first greets guests below deck. Sculpted settee and dinette cushions are highlighted by a teak dining table. Two fixed ports in the hull add a bright open feeling to the expansive salon.

The galley boasts a custom molded, one piece counter top, dry food locker and





overhead cup storage. The long counter space conceals the built in trash chute under the cutting block top. Under the deep stainless double sink are two large cupboards and four drawers. An available built-in microwave beautifully complements the two burner gimballed stainless range with oven.

Two cedar lined hanging lockers and three huge double berths allow plenty of

room for crew and overnight guests.

Like the forward berth, the aft compartment has a double inner spring mattress, and convenient bureau. Also aft is a fixed port in the hull, and a large overhead ventilation/escape hatch provide plenty of light and air flow.

The roomy head is aft, where it is closest to the cockpit. This uncommonly large compartment provides plenty of storage

space, as well as a hot water shower with seat.

Common to all Catalinas are well planned and installed plumbing, electrical, and mechanical systems. All consist of quality components, arranged for easy owner maintenance.

Your Catalina Dealer will be happy to arrange a personal tour for you and your family.







**Catalina**  **Yachts**

21200 Victory Blvd., Woodland Hills, CA 91367  
Phone (818) 884-7700 • Fax (818) 884-3810  
<http://www.catalinayachts.com>

Sold and Serviced by:

*Catalina 34mkII Principal Specifications*

<b>Length Overall</b>	10.87m	35' 8"
<b>Length of Hull</b>	10.52m	34' 6"
<b>Length at Waterline</b>	9.09m	29' 10"
<b>Beam</b>	3.58m	11' 9"
<b>Draft</b>	Fin Keel	1.70m 5' 7"
	Wing Keel	1.30m 4' 3"
<b>Ballast</b>	Fin Keel	2268kg 5000 lbs
	Wing Keel	2540kg 5600 lbs
<b>Approx. Basic Wt.</b>	Fin Keel	5420kg 11,950lbs
	Wing Keel	5693kg 12,550 lbs
<b>Engine</b>	Diesel	
	4 cylinder	26.1 kW 35 hp
<b>Sail Area Standard Rig</b>	Mainsail Rated	21.46m <sup>2</sup> 231 sq.ft.
	Total (100% foretriangle)	49.05m <sup>2</sup> 528 sq.ft.
I	13.41m	44' 0"
J	4.11m	13' 6"
P	11.73m	38' 6"
E	3.66m	12' 0"
<b>Sail Area Tall Rig</b>	Mainsail Rated	22.57m <sup>2</sup> 243 sq.ft.
	Total (100% foretriangle)	51.46m <sup>2</sup> 554 sq.ft.
I	14.02m	46' 0"
J	4.11m	13' 6"
P	12.34m	40' 6"
E	3.66m	12' 0"

All measurements are approximate and subject to change without notice.

Photos and drawings may show optional equipment. Refer to current Equipment List and Order Form.

Member: Certified National Marine  
Manufacturers Association 

Member: **ABYC**  
Setting the Standards for Safer Boating